

MASTERPRO

PREMIUM QUALITY

PROFESSIONAL BLOWTORCH

(THIS BLOWTORCH IS SUPPLIED EMPTY AND WILL NEED FILLING BEFORE USE)

INSTRUCTIONS FOR USE

It is important to read these instructions carefully and familiarise yourself with the product before lighting or using. Reread the instructions periodically to refresh your memory. Retain these instructions for future use.

WARNING

1. IMPORTANT AFTER EACH FILLING, WAIT FOR TWO MINUTES BEFORE USE TO ALLOW GAS TO STABILISE AND FOR VAPOUR TO DISSIPATE.
2. Read directions before use.
3. Only use primary branded aerosol butane gas.
4. Keep the nozzle clean from dust and do not drop the torch as these are normal causes for malfunction.
5. Do not store under direct sunlight or any place where temperatures will exceed 40°C.
6. Do not touch flame guard when hot.
7. Butane gas is extremely flammable. Please handle with care.
8. Always point away from face and clothing when igniting and operating.
9. Make sure the flame lock is turned off and flame is completely extinguished after each use.
10. Do not continually use this tool for over 1 hour.
11. Never puncture or dispose of in a fire.
12. Read and follow all instructions and cautions on the fuel canister
13. Do not use to light cigarettes, cigars or pipes.
14. Never loosen or tamper with the filling valve on the base of the torch.
15. If stored for long periods of time without use, please safely vent all gas from the blowtorch prior to storage. This should be done outside away from any source of ignition.
16. When filled, contains flammable gas under pressure.
17. Never carry a blowtorch in hand luggage or hold luggage on to a plane.
18. Whilst the adjustable anti-flare flame works at any angle, please refrain from pointing flame directly downward, as built up heat may cause damage to the unit. We advise an operation angle of 45° down.
19. Do not leave the ignited blowtorch unattended when the flame lock is on.
20. After use allow torch to cool down before storing.

TEMPERATURE CONTROL

The blue part of the flame is the hottest. A simple way of controlling temperature is the distance of the blue flame to the object you are heating. If you need gentle heat this can be obtained by distance.

OPERATING INSTRUCTIONS

NOTE: Primary branded aerosol butane gas can be bought from most newsagents and tobacconists, also from tobacconist's counters in leading supermarkets.

GAS FILLING

Always fill outdoors in a well ventilated area.

Only use primary branded aerosol butane gas.

Prior to filling ensure the gas refill valve is tight.

Ensure the flame knob is in the off position –flame knob is turned as far clockwise as possible (fig A)

Turn the unit upside down and insert fill stem into fill valve (fig B) and press down for 3-4 seconds, repeat three times. Back spray from fill valve indicates that appliance is full.

After filling allow two minutes for the gas to stabilise.

Always read and follow all instructions and cautions on the fuel canister.

IGNITING

Turn flame knob anti-clock wise to open flame (fig C)

Gas will flow with a hissing sound from flame guard.

Press and hold ignition button to ignite flame (fig D)

FLAME ADJUSTMENT

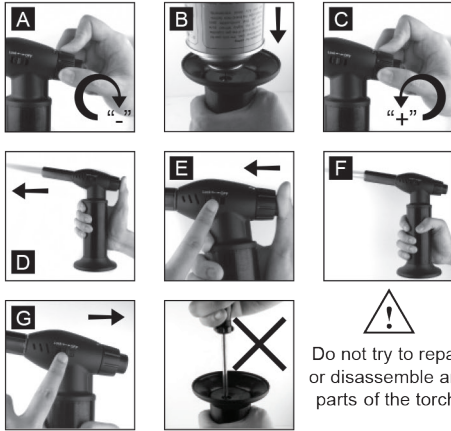
Adjust the flame during use by turning the flame, towards the '+' will make the flame longer, towards the '-' shorter. For best results, keep the flame length at about ½-1 inch. Using a longer flame will cause the flame to become unstable.

Sliding the flame lock to the lock position (fig E), and release the ignition button (fig F). This will give you a continuous flame without holding the ignition button in and allows you better control over the direction of the flame. CAUTION: Use extreme caution when continuous flame is on as the flame is locked on until the flame lock is manually disengaged.

Do not add attachments to the end of the gas refill canister as the valve is designed to accept the gas direct from the gas can without and adaptors added. [These adaptors usually provided for cigarette lighters.]

TURNING OFF

To turn flame off simply release the ignition button, or slide the flame lock button to the off position (fig G).



ALBI GUARANTEE

Our goods come with guarantees that cannot be excluded under the Australian Consumer Law. You are entitled to a replacement or refund for a major failure and for compensation for any other reasonably foreseeable loss or damage. You are also entitled to have the goods repaired or replaced if the goods fail to be of acceptable quality and the failure does not amount to a major failure.

The benefits of this warranty are in addition to any rights and remedies imposed by Australian State and Federal legislation that cannot be excluded. Nothing in this warranty excludes, restricts or modifies any State or Federal legislation applicable to the supply of goods which cannot be so excluded, restricted or modified.

GUARANTEE

We warrant that, subject to the exclusions and limitations below, the Product will be free from defects in materials and workmanship under normal domestic household use for the period of time listed on the Product's packaging. The 12 month warranty period commences on the date of sale by the original retailer to the original purchaser. The warranty applies only while the Product is owned by the original purchaser.

Use of the Product in a commercial capacity will void this warranty.

If a defect appears in the Product before the end of the warranty period and we find the Product to be defective in materials or workmanship, we will, in our sole discretion either:

- (a) repair the Product using identical or similar components; or
- (b) replace the Product with a product comparable in quality and value.

We reserve the right to change or discontinue our product ranges at any time without notice and without liability.

EXCLUSIONS

This warranty does not apply if proper care and/or usage instructions are not followed.

This warranty does not cover scratches, stains, discolouration or damage caused by misuse.

HOW TO CLAIM

Any claims for warranty should be made with proof of purchase and full details of the alleged defect, to the retailer from whom the Product was purchased. If the retailer has closed its business, please contact us at the details below.

You must make the Product available to us or our authorised repair agent for inspection. The cost of delivery of the Product to and from us for the purpose of assessment is your responsibility.

LIMITATIONS

We make no express warranties or representations other than as set out in this Guarantee. The replacement of the product or the refund of the purchase price is the absolute limit of our liability under this Guarantee.

CONTACT

Susskind & Danziger Pty Ltd T/as Albi Imports
87 Chifley Drive, Preston, Victoria 3072
E: albi@albi.com.au
P: +61 (03) 9474 1300
F: +61 (03) 9474 1334